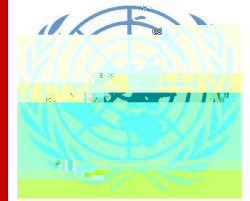


Monthly collections fluctuate a lot, large amounts are uncertain and received at the end of the year, hindering timely allocation of resources to mandated activities.





Active liquidity management, including restricting hiring and withholding full allotments to programmes, has helped conserve cash for business continuity in the second half of the year, to avoid disruption of operations.











.. 1
.. . 01' 1
.. . 1 # : 8
.. . 1
.. . 7
.. .# &/) 2 3 # 4& &
% & \$ - / 4 3 3 # 4& , ;
% & - 4 3 3
% & -\$ / 3 , #
% - / 3 # 0 -
% . 8) /)
%& 8 ' 8)&
% ' (+ # ' * , & 8 &
% , - 5 \$ 8 &
% - 5 8 &
% 6 8 9
% 6 .
.. " / 6 % & 1
.. & 6 + (5
.. & + *
.. & 1

!



#" !

\$\$



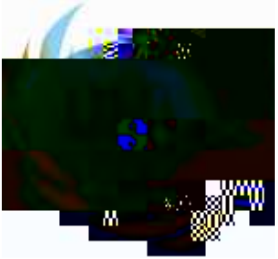


) 2 ! - !B @
" (7 G * !BC@
) H ' (@ * BC@D



5

@



A @

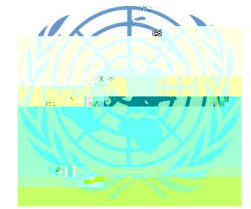


.

!@

!

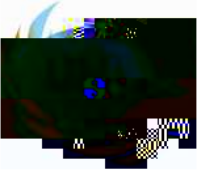






For the current peacekeeping fiscal period, assessme

) & 7 ! - 7
A E



For the current peacekeeping fiscal period, assessments were only issued for six months (July)
*December+ as the new scale of assessment effective 1 January 2022 is yet to be approved.



) H H. B 9 > " 1- I



= H E!

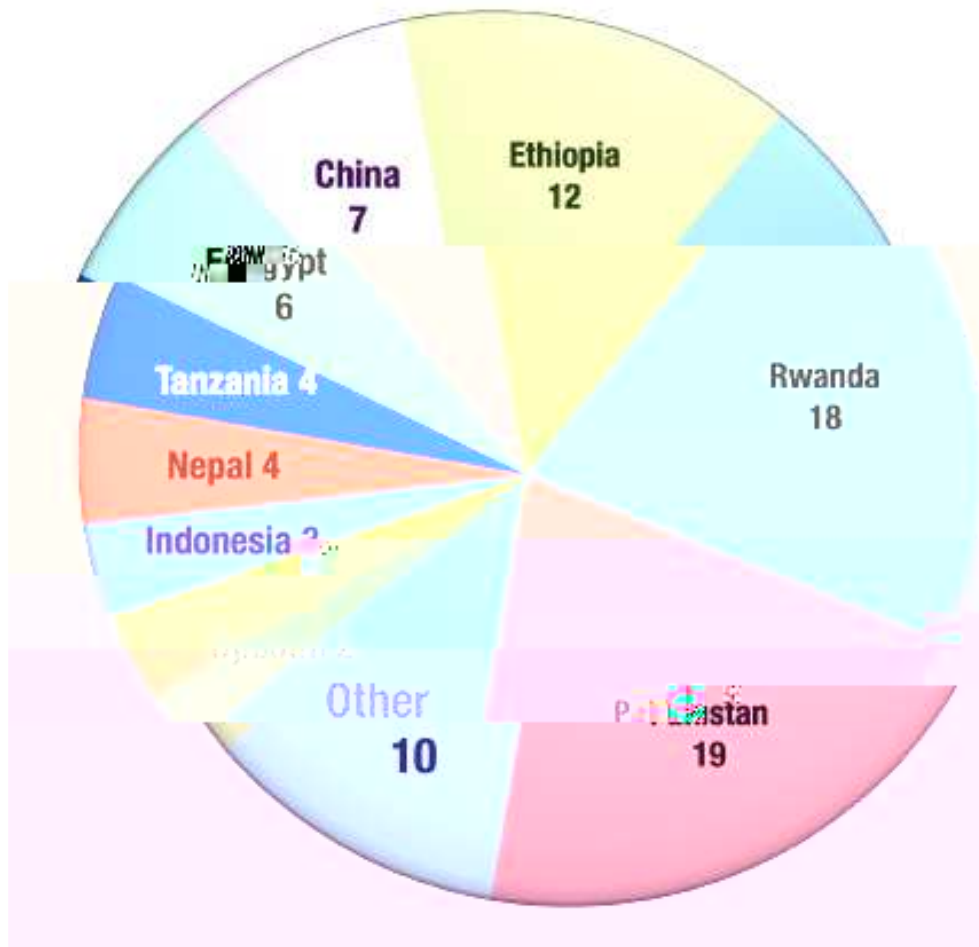
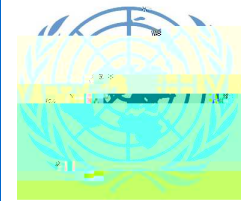
. (' * @ ! !E

. (* @D @D @D

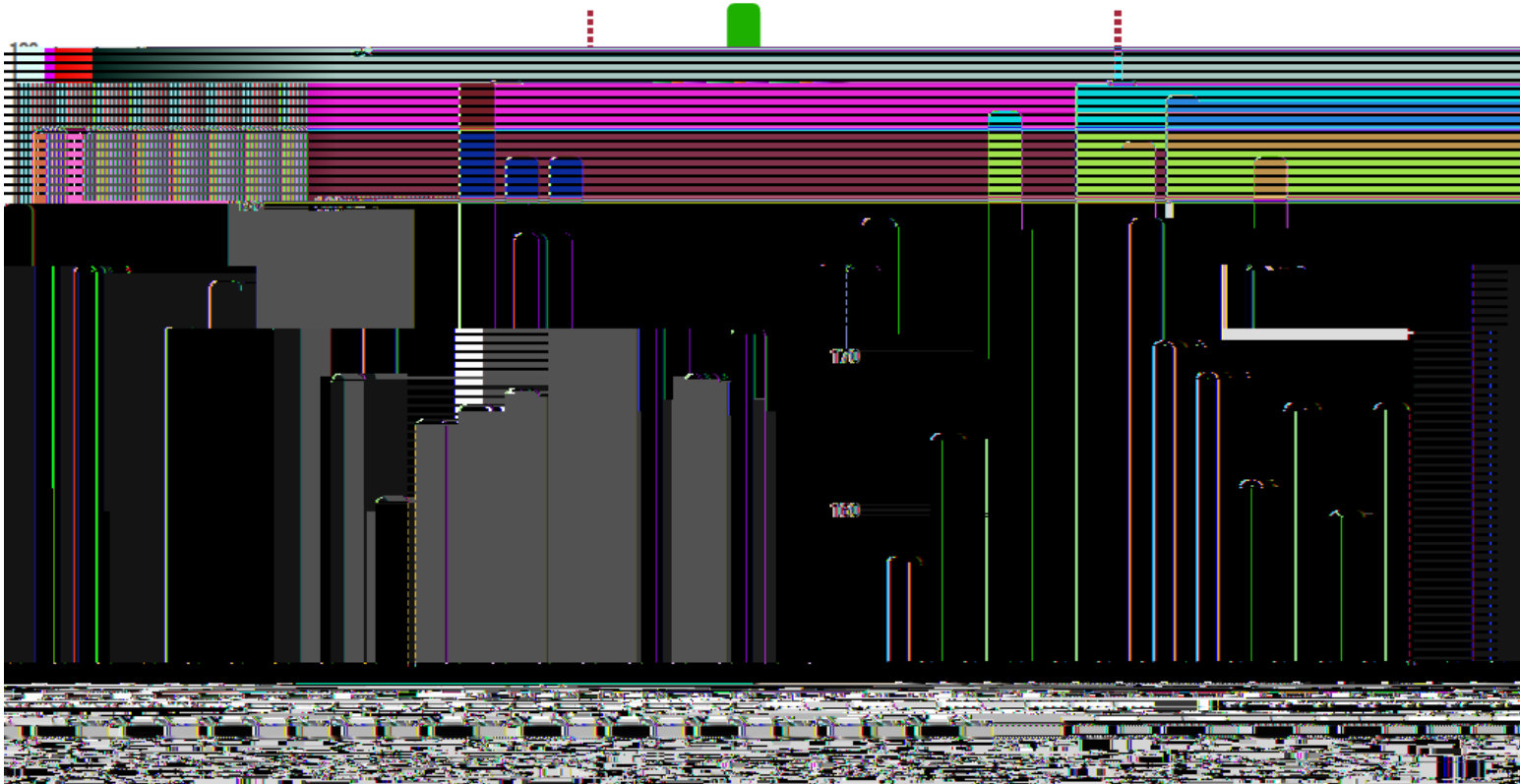
, -outstanding amounts as of % .eptember 2 2' relat

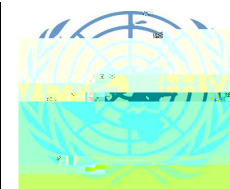


(= H5) > . , : *



& () *! + , * ! -





)

A C



.

!@

@

